

Westwood C390 - Motor Cruiser (2013)

Reference ID: XL1710092153

Builder: Westwood

£ 195,000.00

Length: 12 meters Year built: 2013 Guests: 10 in 2 cabins

Tax paid



Key Features

Builder: Westwood	Length: 12 meters	Beam: 4 meters	Gross Tonnage: 9
Model: C390 - Coupe Cruiser	Max speed: 25 kt	Cruise speed: 15 kt	
Year built: 2013	Guests 10	Cabins: 2	
Location: Deganwy Marina - North Wales	Hull: Fiberglass GRP	Superstructure: GRP	Engine power: 600 hp

Contact Details



Boats UK - Alan Scholes

07710 392389

07710 392389

sales@boats-uk.com

Boat Description

This Westwood C390 boasts a sleek and modern design, catching the eye with its clean lines and well-proportioned exterior. Constructed with high-quality materials, the hull is designed to provide stability and performance even in challenging sea conditions.

The spacious and thoughtfully designed interior of the C390 ensures a comfortable and luxurious experience for all passengers with a large double master cabin, wardrobe and cupboard space with private access to Jack & Jill bathroom/shower/heads. Well-appointed second double cabin with storage and cupboard space. Her fully equipped galley, and a stylish lounge area contribute to an atmosphere of refined elegance providing a fantastic entertaining space.

Powered by 2 x Volvo D4 300Hp Engines with only 323 hours and full-service history, this Westwood C390 delivers a powerful and efficient performance on the water. Her responsive handling and having both forward/stern bow thrusters and advanced navigation systems make it an ideal choice for both experienced captains and those new to boating.

Ample deck space allows for outdoor activities and relaxation, whether enjoying the scenery, sunbathing, or entertaining guests. The C390 is equipped with state-of-the-art entertainment systems, including TV and connectivity options to enhance the onboard experience.

The Westwood C390 Motor Cruiser represents a pinnacle in marine engineering and design, offering a harmonious balance of performance and luxury. Whether cruising along the coast or exploring open waters, this motor cruiser is a testament to Westwood's commitment to providing an exceptional yachting experience. This Westwood C390 was commissioned and built to the owners exacting specification and completed in 2013, she is a credit to her current owner who has meticulously maintained her since new and is now only selling due to lack of use. She has a berth at Deganwy Marina which may be available to any purchaser who is interested in having a berth in this area.

As a broker we rarely see a boat of this quality come on the market. She is one not to be missed if you are looking for a unique luxury cruiser ready for her next owner.

Please email sales@boats-uk.com or call Alan Scholes 07710 392389 for more information or arrange a viewing.

Specification

Overview

Name:	Westwood C390 - Motor Cruiser (2013)
Boat type:	Cabin Cruiser
Category type:	Cruiser
Builder:	Westwood
Model:	C390 - Coupe Cruiser
Year built:	2013
Last Refitted:	2013
Reference ID:	XL1710092153
Location:	Deganwy Marina - North Wales
Used/New:	Used Boat

Dimension

Overall length:	12 meters
Beam:	4 meters
Draught:	1.04 meters
Gross Tonnage:	9

Performance & Capacities:

Max speed:	25 kt
Cruising speed:	15 kt

Engines

Engine Make:	Volvo
Engine Model:	D4 300
Engine Type:	Inboard
Engine Quantity:	2
Total power:	600 hp

Construction & Design

Hull:	Fiberglass GRP
Superstructure:	GRP
Hull type:	Semi-Displacement
Number of Decks:	1

Accommodation

Guests:	10
Cabins:	2

Fuel capacity: 700 litres
Water capacity: 450 litres

Complete Details

Engines: 2 x Volvo D4 300Hp Inboard Engines with Only 323 Hours (full service history from new). Antifouled last year and hauled out annually for hull clean check and antifouled when needed. Anodes changed March 2023 and all sea cocks/through hull fittings checked.

Main Cabin: Large double bed, two wardrobes and multiple drawers

Second Cabin Two single beds with one wardrobe and one cupboard

Saloon: Entrance from cockpit through double sliding doors, saloon table and seating to port and helm seating with all navigation and instruments, access to lower deck and galley.

- 5 x Batteries (Plus 2 Used for Bow thrusters)
- Windless Anchor
- Forward and stern Bow Thrusters
- Auto Pilot
- Radar
- Search Light
- CCTV for engine compartment and Rear berthing area
- 220 Shore Power
- 2 x Fridges Galley and Cockpit
- 1 x Oven/Sink/Gas-Hob in Galley area
- 2 x Fire extinguishers Engine Bay and 1 x Fire Extinguisher in Galley area
- 1 x Full Cockpit Enclosure
- 1 x Heads (Electric & Pump Out)
- 1 x Holding Tank (165 Litres.)
- 1 x Webasco Cabin Heating
- 1 x Gas Cylinder
- 1 x TV in stowaway cupboard
- 1 x Life-Raft
- 1 x Dinghy
- 1 x Spare Anchor & Chain
- 1 x Boat Hook
- All Warps, fenders, bedding, cushions and crockery included in the sale.

Extras

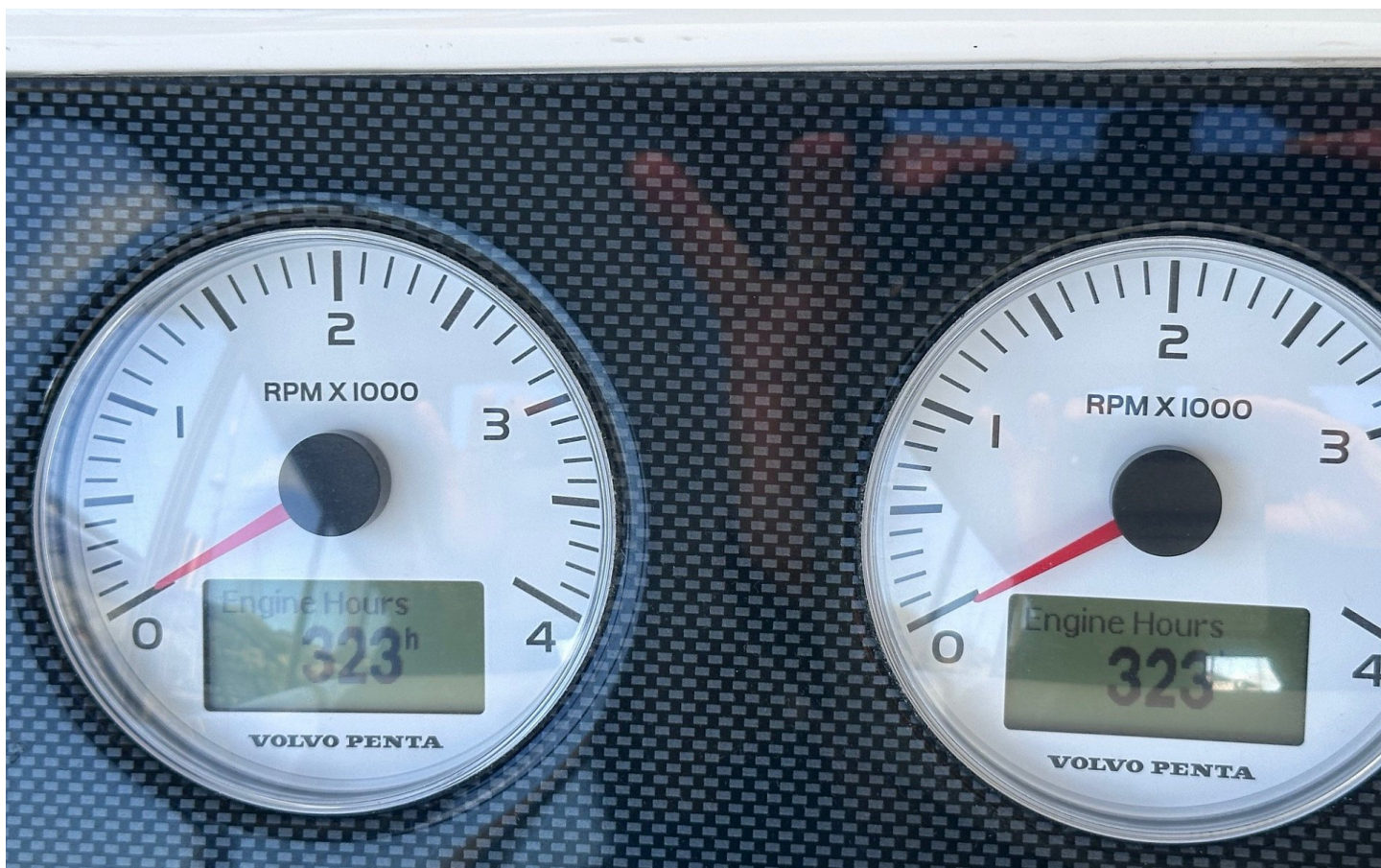
- Stern thruster
- Battery charger
- 220/240v shorepower
- CCTV camera system
- Refrigerator
- TV salon
- Compass
- Bathing platform
- Electric windlass
- Autopilot
- Bow thruster
- Inverter
- Radar
- MOB System
- GPS
- Shore Connection
- Deck Shower
- Oven
- Life Raft

- Stereo System
- Holding Tank
- Heating



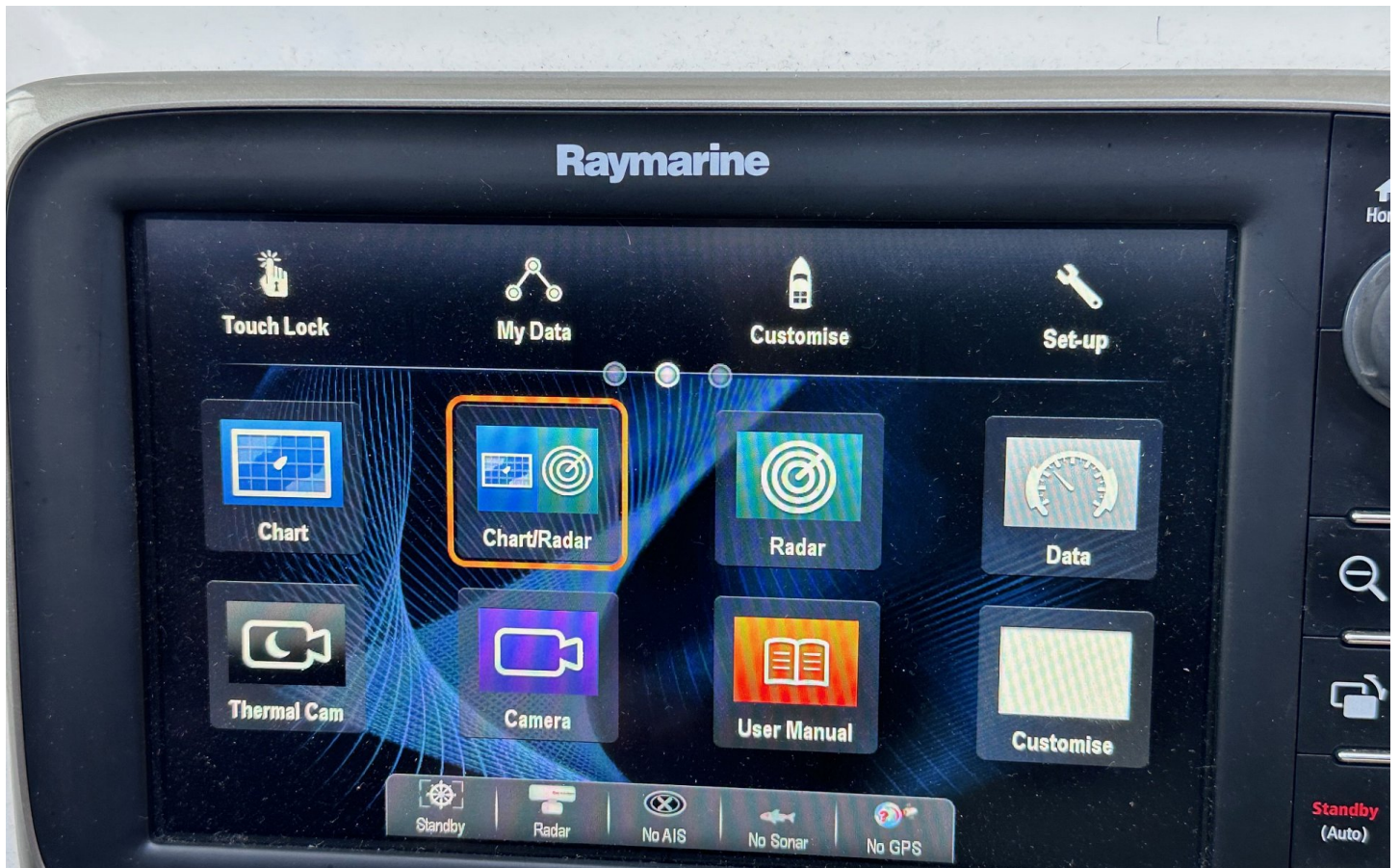




















Disclaimer

Boats-Uk.com offer the details of this vessel in good faith but cannot guarantee or warrant the accuracy of this information nor warrant the condition of the vessel. Buyers should appoint a surveyor to investigate and satisfy themselves that the vessel is of the condition expected. This vessel is offered subject to prior sale, price change, or withdrawal without notice.

Any safety equipment such as life rafts, fire extinguishers and flares etc. are usually personal to the current owner(s) and if being left on-board as part of the sale of a used vessel may require servicing, or changing to meet safety standards and is the buyer's responsibility.

Whilst we try to obtain documentation from Vendors it is advisable to check what is available before travelling to view or making an offer, so you have prior knowledge of what documents are held by Boats-Uk.com.